



RIDE UNRIVALLED

www.custom-chrome-europe.com



World's Finest Products For Harley-Davidsons

BLUE

BANDIT



SOFTAIL FLSTF



**BOLT ON
AND RIDE**

BLUE

BANDIT

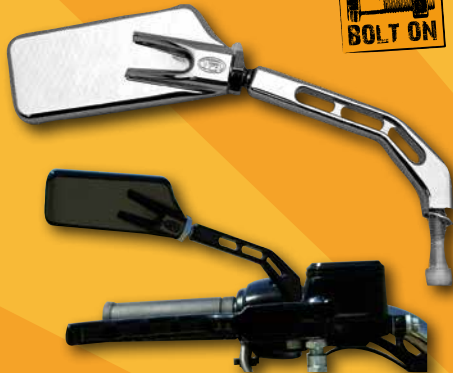






Joker

MACHINE



Joker's Viewtech I Mirrors

Unique "Pocketed" aircraft milling design along the stem for lightness. VIEWTECH mirror stems and heads are completely CNC machined from billet aluminum (not cast), light-weight, strong and fully adjustable in every direction to fit just about everyone. Once the mirror is positioned, a simple twist of a wrench keeps them at your desired tension setting right where you want them, unlike the competition's non-adjustable designs that fail with time. The swivel post assembly is completely serviceable and is machined from stainless-steel alloy to ensure corrosion free operation. Available in show chrome or hard black anodized finishes. A direct bolt-on fit for late model Harley hand controls (including V-Rod) and most aftermarket hand controls!

682298 Chrome, left

682299 Chrome, right

682300 Black, right

682301 Black, left

CATALOG "EDITION 46" PAGE 4.110



ORIGINAL
THUNDERBIKE
CUSTOMS



Thunderbike Flip Handle Bar

Made of 1,25" tubes with 1" grip ends.

- 683780** Large: 93cm wide, 38cm high
- 683781** Small: 80cm wide, 30cm high
- 683782** Large, Springer: 96cm wide, 38cm high
- 683783** Small, Springer: 80cm wide, 30cm high



AVAILABLE WITHOUT GRIPS



SHOW CHROME Contrast Cut



Contour Handlebar Controls by Performance Machine

Set with cable clutch

- 889573** Standard 3 button, contrast cut
- 889574** Standard 3 button, chrome
- 889577** 12-16 Can-Bus Switch housing, contrast cut
- 889578** 12-16 Can-Bus Switch housing, chrome

Set with hydraulic clutch

- 889575** Standard 3 button, contrast cut
- 889576** Standard 3 button, chrome
- 889579** 12-16 Can-Bus Switch housing, contrast cut
- 889580** 12-16 Can-Bus Switch housing, chrome

8790 ADAPTIVE TECHNOLOGY SERIES

8700 EVOLUTION 2 SERIES



J.W. SPEAKER.

Engineered. Lighting. Solutions.

**THE WORLD'S FIRST "ADAPTIVE LOW BEAM"
LED MOTORCYCLE HEADLIGHT**

LED Adaptive Technology Headlights 7"

- 890445** Black
- 890446** Chrome

LED Headlights 7"

- 619521** LED 7" Insert EU, black incl. position light
- 619522** LED 7" Insert UK, black incl. position light
- 619523** LED 7" Insert EU, chrome incl. position light
- 619524** LED 7" Insert UK, chrome incl. position light

CATALOG "EDITION 46" PAGE 5.18



motogadget

m-Blaze Pin by motogadget

Single turn signal with M8 threaded stud with M8 screw and 1 m long wiring cable to connect into the bike harness.

888370 m-Blaze Pin, black

888371 m-Blaze Pin, polished

CATALOG "EDITION 46" PAGE 5.68





Ness Magnaflow F-Bomb 2 into 1 Exhaust

The aggressive custom look F-Bomb is engineered to increase power and performance with an attitude while delivering a deep, hot rod sound.

- 4 1/2" Hot Rod Muffler
- Full Coverage Heat Shields
- Aggressive 2 into 1 Performance
- Power For Stock or Tuned Engines
- 12mm and 18mm O2 Sensor Ports
- Inverted end caps chrome on chrome systems and black on black systems
- New improved Stepped headers
- Magna Black, non bluing, stainless steel stepped head pipes

607952 Chrome for Softail models 86-16

607953 Black for Softail models 86-16

607966 Chrome for Sportster models 04-16

607967 Black for Sportster models 04-16

607960 Chrome for Dyna models 08-16

607961 Black for Dyna models 08-16

CATALOG "EDITION 46" PAGE 7.07

Exhaust systems shown may be intended only for restoration purposes or to be used on closed areas such as race tracks. The use of this items on public roads may be against local, state and/or federal/EU laws.

Note: No warranty on exhaust chrome plating bluing or discoloration. All EFI models must be remapped! Please ask your local dealer.



Inverted Series Air Cleaner Kits by Arlen Ness

- The ultimate combination of performance and design for your V-Twin engine.

- Each handmade air filter is made in the USA and features an inverted pleated top with pleated sides to maximize airflow. Our pre-oiled black filter element is encapsulated in a stainless steel jacket for the ultimate in style and durability.
- Forged air filter housings feature built in velocity stacks that scream performance and enhance looks.
- Forged billet backing plate features our proven radius inlet, hidden breather hardware and our industry leading Big Sucker patented technology.
- Available in chrome or black anodize finishes.
- All mounting hardware and gaskets are included.

Beveled Inverted Air Cleaner

- 654127** Beveled air cleaner for TBW chrome
- 654128** Beveled air cleaner for TBW black
- 654129** Beveled air cleaner for 00-16 Big Twin (except TBW) chrome
- 654130** Beveled air cleaner for 00-16 Big Twin (except TBW) black

Accessories

- 654131** Replacement filter for Inverted Series air cleaners

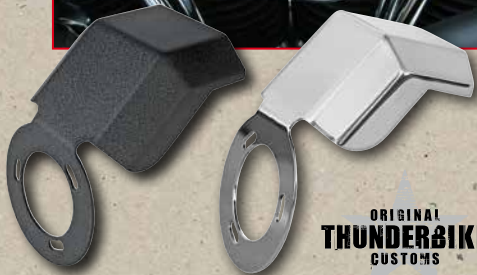


654128



654127

CATALOG "EDITION 46" PAGE 8.50



ORIGINAL
THUNDERBIKE
CUSTOMS

Thunderbike EFI Covers

Available in black wrinkle or polished finish.

653073 TB EFI Cover POL (except TBW models)

653074 TB EFI Cover BLK Wrinkle (except TBW models)

CATALOG "EDITION 46" PAGE 8.28

I2



10-Gauge Design Top Rocker Box Covers by Arlen Ness

Machined from 6061-T6 forged billet aluminum these covers drastically change the look of your engine. Matches the other 10-gauge design parts by Arlen Ness. Replaces the OEM top rocker box cover. Includes necessary gaskets and hardware. Available in chrome or gloss black armor coated that will never fade from heat or UV exposure. Fits all Twin Cam models 99-Up. Sold in pairs.

654190 Chrome rocker box top covers

654191 Black rocker box top covers

CATALOG "EDITION 46" PAGE 9.81



Arlen Ness 10-Gauge Pushrod Covers

550004 For Twin Cam models 99-16, chrome

550005 For Twin Cam models 99-15, black

CATALOG "EDITION 46" PAGE 9.71



654196



654197



10-Gauge Design Lifter Block Covers by Arlen Ness

A unique style to change the look of your engine. These lifter block covers matches the other 10-Gauge Design parts from Arlen Ness and looks real nice with the matching push-rod covers. Machined from 6061-T6 forged billet aluminum. Available in chrome or gloss black armor coated that will never fade from heat or UV exposure. Fits all Twin Cam models 99-16. Sold as a pair.

654196 Chrome lifter block covers

654197 Black lifter block covers

CATALOG "EDITION 46" PAGE 9.65



654198



654199



654200



654201

10-Gauge Design Transmission End Cover by Arlen Ness

A unique style to change the look of your transmission. This transmission end cover matches the other 10-Gauge Design parts from Arlen Ness and looks real nice with the matching transmission top covers. Machined from 6061-T6 forged billet aluminum. Available for standard clutch cable models or hydraulic clutch models in chrome or gloss black armor coated that will never fade from heat or UV exposure. Includes necessary gaskets and hardware. The hydraulic cover mounts on top of the OEM hydraulic unit. Standard clutch cable style: Fits Twin Cam Touring models 07-13 and non-fairing Touring models 14-16, Softail models 07-16 and Dyna Glide models 06-16. Hydraulic clutch style: Fits Touring models 14-16 with fairings. Sold each.

654198 Chrome transmission end cover clutch cable style

654199 Black transmission end cover clutch cable style

654200 Chrome transmission end cover hydraulic clutch style

654201 Black transmission end cover hydraulic clutch style



Arlen Ness Beveled Derby and Point Covers

- Machined from 6061-T6 Billet aluminum
- Several styles in black anodize or chrome finish
- Chrome hardware included and Gasket
- Matching Beveled Point Cover and other accessories are available separately

Derby Covers for Twin Cam Models 99-16

550139 Black

550140 Chrome

Derby Covers for Sportster Models 04-16

550141 Black

550142 Chrome

Point Covers for Twin Cam Models 99-16

550143 Black

550144 Chrome

Point Covers for Sportster Models 90-16

550145 Black

550146 Point Cover





Arlen Ness 10-Gauge Transmission Top Cover

10-Gauge transmission top covers fits Dyna models 06-16 , Touring, and Softail models 07-16

550006 Chrome

550007 Black

CATALOG "EDITION 46" PAGE 11.42



METZELER 
MOTORCYCLE TYRES

Metzeler ME888 Ultra Motorcycle Tires

Front tires

619887 ME888 ULTRA 130/90 - 16 M/C 67H TL

619888 ME888 ULTRA MT90 B 16 M/C 72H TL

619889 ME888 ULTRA 130/80 B 17 M/C 65H TL

619890 ME888 ULTRA 100/90 - 19 M/C 57H TL

690993 ME888 ULTRA 130/70R18 M/CTL 63H

690995 ME888 ULTRA MH 90-21 M/CTL 54H

690997 ME888 ULTRA 130/60 B23 M/CTL 65H

619907 ME888 ULTRA 120/55R26M/CREINFTL 67H

CATALOG "EDITION 46" PAGE 13.56



METZELER 
MOTORCYCLE TYRES

Metzeler ME 880 Tires

Rear tires (Marathon)

683546 ME 880 170/60 R17 M/C 78V
 reinf TL

86736 ME880 rear tire 200/60 R-16
 M/C 79V

687664 ME880 200/70 B15 M/C 82H

86737 ME880 rear tire 210/50 ZR-17
 M/C 76W TL

86504 ME880 rear tire 240/50V-16

86512 ME880 rear tire 240/40V-18

687673 ME 880 260/40 VR18 M/CTL 84V rear tire

686569 ME880 rear tire 280/35 R-18 84V

683052 ME880 300/35VR18M/CTL 87V

Rear tires narrow white stripe

653337 ME 880 MU85 B 16 M/C 77H

Rear tires white wall

653338 ME 880 MU85 B 16 M/C 77H



Performance Machines Billet Front Wheel

891441 Contour Collection Revel front wheel, 23x3.5",
 chrome

CHECK CCE DEALER STORE





Performance Machines Billet Front Wheel
891568 Contour Collection Revel rear wheel, 18x8.5",
chrome

CHECK CCE DEALER STORE

I8



889893

**Swingarm Kit "Starfire" for Softail Twin
Cam 00-16 by Thunderbike with Approval**

- Up to 260 mm tires
- Swingarm comes powder coated
- Kit includes: Swingarm, axle covers, axle, axle spacer, stainless steelsplash guard
- Brackets for OEM brake system are welded on
- Primary Offset-Kit must be order separately

889893 Softail Twin Cam 99-07

889894 Softail Twin Cam 08-16

CATALOG "EDITION 46" PAGE 14.09



888793



888787



888789



888794



888791



888790



888792



888788



888795

Primary Offset Kit For Twin Cam Models 14-16

This new primary offset kit allows for the installation of up to 240 wide rear tires in wider than stock swingarms without taking the transmission apart and still use the stock final drive belt. When converting to the 20 mm wide final drive belt or chain, up to 250 wide rear tires can be installed. Includes spacers to offset the primary 1/4" (6 mm), extended starter bolts, compensator sprocket spacer, extended motor sprocket bolt, clutch spacer and offset 32 tooth transmission belt pulley. Fits all 2014 to present Touring, Dyna and Softail models except FXSB Breakout..

Complete Kit

888786 Primary offset kit for 14-16 Twin Cam Models (except FXSB)

Replacement Parts

888787 Motor/primary spacer-1/4" raw aluminum

888788 Starter bolts (4 needed) sold each

888789 Starter spacer, raw aluminum

888790 Compensator spacer stainless steel

888791 Motor sprocket bolt

888792 Clutch spacer stainless steel

888793 Offset belt sprocket (32 Teeth)

888794 Inner/outer primary bolts and washers

888795 Transmission/primary spacer



Arlen Ness "KO" Raked Triple Trees for FLST, FLSTF Models

6° Billet Triple Tree Kits

890796 6° Billet Triple Tree Kits for FLST, FLSTF Models



CHECK CCE DEALER STORE



654001



654000

Arlen Ness 'Deep Cut' Fork Boots

The new 'Deep Cut' fork boots will radically change the look of your front end. They are machined from forged 6061-T6 billet aluminum and designed to replace your OEM fork boot covers. Available in either a chrome-plated or black anodized finish.

654000 Chrome, for all 86-13 FLH/FLT

654001 Black, for all 86-13 FLH/FLT

654162 Chrome, for all 14-15 FLH/FLT models

654163 Black, for all 14-15 FLH/FLT models

550017 Chrome, 86- FLST/N/F (not 07 models)

550018 Black 86- FLST/N/F (not 07 models)

CATALOG "EDITION 46" PAGE 15.25



Arlen Ness 'Hot Legs' Fork Sliders for Touring Models

**Fits all FLH/FLT Models
14-Up**

Dual Disc

**Fits all FLST Models from
08-15**

550022 Smooth Hot Legs,
chrome

550023 Deep Cut Hot Legs,
black

**Fits all FXST Models from
07-15**

550024 Smooth Hot Legs,
chrome

550025 Deep Cut Hot Legs,
black

**Fits all FXD/FXDL Models
from 08-15**

550026 Smooth Hot Legs,
chrome

550027 Deep Cut Hot Legs,
black



CATALOG
"EDITION 46"
PAGE 15.27



AVAILABLE IN BLACK

Smooth Fork Tins for Late Softails

This 3-piece late style fork tin kit is available in chrome or black finish. No grooves or ball mills just smooth, sleek surfaces.

642710 Smooth chrome fork tins 00-15 FLST models

642711 Smooth black fork tins 00-15 FLST models

CATALOG "EDITION 46" PAGE 15.23



697148

**LEGEND
AERO-ST**
WWW.LEGENDSUPPLY.COM



**CUSTOM
CHROME
EXCLUSIVE**

Legend AERO Softail Suspension Kits with Approval

For 89-99 FXSTIFLST models
697147 Black

For 00- FXSTIFLST models
697148 Black

CATALOG "EDITION 46" PAGE 15.44



Fork Side Trim for Softail Models

Chrome tin with no accents for all FL Softail models from 86-14.

220059 Sold in pairs (repl. OEM 67819-86)

CATALOG "EDITION 46" PAGE 15.23

**FXSB****Cut-Out****XL1200X****Slotted****FXDB/FXDF****non cut out**

TXT
CUSTOMPARTS & BIKES



Tire Size	Softail							
	FX-Softail 84-16			FL-Softail 88-16		FXSB 13-16		
	cut out	non cut out	Slotted	cut out	non cut out	Slotted	cut out	non cut out
MT90/16	696541		86312	696536		86658		
120/70R16 130/60(70)-16 , 120/60R17 , 130/70R16,	696542	86659		696537	86660			
130/70-17,130/80-16,130/60-18,120/60-18	696543	86661		696538	86662			
130/70-18,120/70-18,130/90-16,130/80-17	696544	86663		696539	86664		889101	889100
140/75R17				889113	889112			
100/90R19,130/80R18	696545	86830		696540	86831			
MH90-21 , 100/90R21	685377	685375		685376	681272			
120/70R21 / 130/60R21							889103	889102
140/70R21							889105	889104
130/60R23 , MH 90-21	890629	890627		890635	890632			
Universal	890630	890628		890636	890633			



TXT DIY Rear Fenders (without Approval)

TXT DIY fender kits are available with model options listed below:

<i>Design</i>	<i>Options</i>		<i>Softail</i>			<i>Dyna</i>		<i>Sportster</i>	
			FX/FL-Softail 08-16		FXCW 08-11, FXSB 13-16	FXD 99-16		XL 883, 1200 04-16	
	<i>Arc Length</i>	<i>Cut-Out</i>	200 Tire	260 Tire	260 Tire	210 Tire	240 Tire	180 Tire	210 Tire
			230 mm	270 mm	270 mm	230 mm	270 mm	200 mm	230 mm
Short Style XL, Dyna	340 mm	Non Cut Out				890611	890612	890594	890595
Short	500 mm	2 Cut Out	890619	890665	890667				
Medium	580 mm	3 Cut Out	890664	890666	890668	890609	890610		
Smooth	620 mm	Non Cut Out	890669	890670		890607	890608		
New Line Short	450 mm	Non Cut Out	890681	890682	890679				
	450 mm	2 Cut Out	890675	890676	890673				
New Line	540 mm	Non Cut Out	890677	890678	890680				
	540 mm	3 Cut Out	890671	890672	890674				

Arlen Ness Oil Dipsticks

- Direct OEM replacement and includes swiveling Dipstick to monitor oil level.
- CNC machined billet finish.
- Slot Track and Beveled styling with black anodized or chrome finish.



Beveled



Slot Track



Slot Track



Beveled

- 550084** Slot Track fits 07-16 FLT, black
- 550085** Slot Track fits 07-16 FLT, chrome
- 550086** Beveled fits 07-16 FLT, black
- 550087** Beveled fits 07-16 FLT, chrome
- 550088** Slot Track fits 06-16 Dyna, black
- 550089** Slot Track fits 06-16 Dyna, chrome
- 550090** Beveled fits 06-16 Dyna, black
- 550091** Beveled fits 06-16 Dyna, chrome
- 550092** Slot Track fits 99-05 Dyna, black
- 550093** Slot Track fits 99-05 Dyna, chrome
- 550094** Beveled fits 99-05 Dyna, black
- 550095** Beveled fits 99-05 Dyna, chrome
- 550096** Slot Track fits 00-16 Softail, black
- 550097** Slot Track fits 00-16 Softail, chrome
- 550098** Beveled fits 00-16 Softail, black
- 550099** Beveled fits 00-16 Softail, chrome
- 550100** Slot Track fits 00-06 FLT, black
- 550101** Slot Track fits 00-06 FLT, chrome
- 550102** Beveled fits 00-06 FLT, black
- 550103** Beveled fits 00-06 FLT, chrome



601800



601803



Stretched 'Super Cruiser' Steel Gas Tanks for Custom Applications

- Made of heavy-gauge steel for maximum strength and durability.
- Designed to use pop-up caps or bolt-in cap kits.
- Tank must be fitted to frame before painting.
- Available in a 3.5 gallon with 2" or 5" stretch.

601800 3.5 gal. tank with 2" stretch made for pop-up cap, L- 23.5", W- 13.5", H - 9"

601801 3.5 gal. tank with 2" stretch made for bolt-in cap, L- 23.5", W- 13.5", H - 9"

601802 3.5 gal. tank with 5" stretch made for pop-up cap, L- 25.25", W- 14", H - 8"

601803 3.5 gal. tank with 5" stretch made for bolt-in cap, L- 25.25", W- 14", H - 8"

Custom Pop-Up Gas Caps

47775 Stainless Steel

47777 Chrome

Aircraft-Style Bolt-In Gas Caps

Comes with mounting ring, gasket, screws and cap.

08661 Locking vented cap kit

08660 Non-locking vented cap kit

CATALOG "EDITION 46" PAGE 16.41

MODIFIED!

custom
RR



Gas Tank Weld-In Plate for Sportster Fuel Pumps by customRR

CNC made steel plate (20 mm) to weld in the basement for Sportster EFI fuel pumps into aftermarket gas tanks.

690900 Weld-In bracket

Note: Please check clearance before welding this plate into a tank to make sure the EFI pump fits into the chosen tank version!

CATALOG "EDITION 46" PAGE 16.37



motogadget

motoscope Mini

The motoscope mini is a highly compact digital instrument for motorbikes. The LED display we created for the motoscope mini is unique in the instrument realm. 251 ultra bright LEDs provide for an essentially rimless and extremely readable display surface which can entirely be used for the display of readings. This intricate and innovative technology combines a maximum of display surface with minimal casing dimensions. The unadorned and elegant design of the motoscope mini and its high class appearance fits every bike, trike or four-wheel vehicle. Exposed mounting can reinforce style and looks, but it might just as well be installed more discretely and 'clean' - with the mini, everything is possible!

Length, Height, Depth: 59 mm/21.5 mm/13 mm, Weight: approx. 32 g, Mount: 2xM3 threaded hole, Power consumption, operating: approx. 100 mA, Operating voltage: 7 V - 18 V, Operating temperature: -20... +80 °C

681475 Motoscope Mini Black

681476 Motoscope Mini POLISHED

684961 Push button for Motoscope Mini

CATALOG "EDITION 46" PAGE 17.06





motogadget

Motosign Mini

It is an extremely small indicator light unit featuring 5 coloured LEDs. The device is very suitable for the motoscope mini. Length /width /depth: 46 mm, 8 mm, 13 mm; length of the connecting cable is approx. 50 cm; two threaded fastening bores (M3); weight with cable is approx. 18 grams; The device is already equipped with integrated multiplier resistors.

LED colors:

- 2 x green (indicators left/right or 1 x indicators/ 1 x warning light)
- 1 x green (idle gear)
- 1 x blue (high beam)
- 1 x red (warning light)

681477 Motosign Mini black

681478 Motosign Mini polished





Arlen Ness Re-Usable Billet Oil Filter

This filter version fits: 99-15 Twin Cam (All Models), 91-98 Dyna Glide, 82-98 FLT, 84-99 Softail, 85-15 XL, 09-12 XR1200, Buell 97-02 MC Cyclone, 95-22 S3 Thunderbolt, 96-02 X1 Lightning models.

Features:

- Catches items down to 35 microns, which is about three times better than most premium traditional oil filters.
- Filters maintain consistent flow under all conditions including extreme heat, presence of water, and cold start-ups.
- Simple filter cleaning and service.

550008 Deep Cut, chrome

550009 Deep Cut, black

550010 Beveled, chrome

550011 Beveled, black

550012 Repl. spring & oil ring set

550013 Repl. reusable filter

CATALOG "EDITION 46" PAGE 17.08







BLUE

BANDIT

BOLT ON

AND RIDE



World's Finest Products For Harley-Davidsons

Custom Chrome Europe GmbH
Carl-von-Ossietzky-Straße 8
55459 Grolsheim/Germany

Phone: +49 (0) 6721 - 4 007 - 0

Fax: +49 (0) 6721 - 4 007 - 100

e-mail: info@customchrome.de

www.custom-chrome-europe.com

Managing Director: Thomas Noetzel · Mainz Local Court
Commercial Registry No. 45562 · VAT No. DE811309246