



**BRATSTER**



XL 1200 C
SPORTSTER 1200 CUSTOM 2012





WHAT'S BOAR?



Since 2009, Custom Chrome Europe has inspired the scene with a new slogan: „Bolt On and Ride“. While neither „Bolt On“ nor „Ride“ are new themes in a long established and creative customizing scene, the CCE team has successfully combined both themes into now annually built custom bikes which are based on existing motorcycle models that are modified with the latest and best parts available from the worldwide aftermarket. „Bolt On“ stands for easy to mount custom parts, some to be installed by the owner or garage customizers, others, more sophisticated parts, by professional CCE partners, custom shops or authorized Harley-dealers - but it never stopped the individual builder from further individualization, be it by color, surface finish treatment, engravings or what ever creative ideas come to mind. And the “Ride” part? This is not just for pleasure, but assures the CCE team that these parts will work under rough and sometimes extreme conditions when the CCE team is “On the Road” to events all over Europe. But yes, the “Ride” part is also fun ...



If you search for the definition of „Brat“ you come to quite a variety of interpretations, most of which describe an annoying, impolite, ill-mannered, spoiled child, basically a kid that can't behave and doesn't care about what you tell it, be it female or male, albeit in most cases the term is applied to males. Custom Chrome Europe reached out to German Custom-Specialist Deathfield Choppers - and the close to Bonn-based team worked their way around a stock XL 1200 Custom Sportster to create a rolling „Brat“ on two wheels. Including many parts of Japanese origin.

The trademark „Brat Style“ lowering of the seat height, is done by the popular „Slammer“ kits at Burly Brand. These kits include lowering solutions for both front and rear and have the benefit that you mount a complete system, which has already been adjusted to perform in harmony.

The Custom Chrome Europe BOAR history has seen „knuckled“ Twin Cams as well as Sportsters with Panhead rocker covers. French manufacturer EMD is responsible for a complete styling review of the modern Sportster motor, using the Shovelhead styled rocker covers. Special on this BOAR custom is EMD's „Electric Kickstarter“: It is a new idea, it is funny and it's a cool „gimmick“ that adds a new twist to traditional looks. It looks like a real kick-starter, but it is a change from any conventional operated kicker. As a matter of fact: It is possible to „kickstart“ this Harley by hand - if you dare to.



THORSTEN MATTHES
DEATHFIELD CHOPPERS





BIKE --- INFO

MODEL	XL 1200 Sportster "C"
YEAR	2012
CREATED BY	Deathfield Choppers, Meckenheim
TIME	6 weeks (2019)
BIKE NAME	BRATSTER
PAINTJOB	Katharina von der Eiche Works





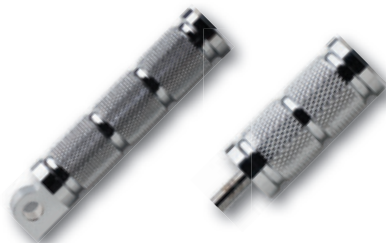


BARE BONES SOLO SEAT

642070 04-06 SPORTSTER WITH 4.5 GAL TANK & 10-19,

DIAMOND STITCH BLACK

CATALOG EDITION 48 | PAGE 2.12



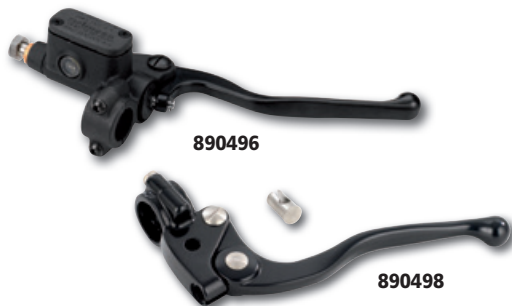
World's Finest Products For Harley-Davidsons

STROKER FOOT PEGS

604984 FOOT PEGS

604987 SHIFTER PEG

CATALOG EDITION 48 | PAGE 3.28



GRIMECA HAND CONTROLS

890496 BRAKE MASTER CYLINDER

890498 CLUTCH LEVER ASSEMBLY

CATALOG EDITION 48 | PAGE 4.64



World's Finest Products For Harley-Davidsons

ANTIQUE STYLE MIRROR

653743 3" BRASS FINISH MIRROR WITH CHROMED STEM

CATALOG EDITION 48 | PAGE 4.137



DELUXE EXTERNAL THROTTLE HOUSING

888961 BLACK

CATALOG EDITION 48 | PAGE 4.120



World's Finest Products For Harley-Davidsons

SWITCH HOUSING KITS

890365 DUAL BUTTON, BLACK

CATALOG EDITION 48 | PAGE 4.77



World's Finest Products For Harley-Davidsons

NYLON THROTTLE PIPES

12880 THROTTLE PIPE FOR SINGLE CABLE

CATALOG EDITION 48 | PAGE 4.115



CUSTOM CLASSIC GRIPS

890062 BLACK

CATALOG EDITION 48 | PAGE 4.113



SHORT RISE HANDLEBAR

893097 1", BLACK

CATALOG EDITION 48 | PAGE 4.20



DAYTONA

NEO VINTAGE HEADLIGHT INSERT

901346 5 3/4", LED

CATALOG EDITION 48 | PAGE 5.6



motogadget

M.BLAZE DISC BAR END TURN SIGNALS

618450 LEFT, 22MM AND 1", BLACK

618451 RIGHT, 22MM AND 1", BLACK

CATALOG EDITION 48 | PAGE 5.75



Kellermann

ATTO DF TURN SIGNAL/TAILLIGHT/ BRAKE LIGHT

912652 REAR, LEFT, RIGHT, BLACK

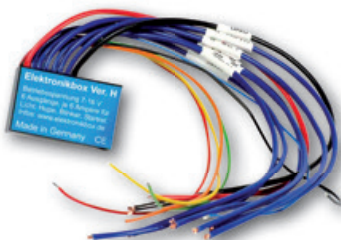
CATALOG EDITION 48 | PAGE 5.83



SIDE MOUNT LICENSE PLATE KIT

913176 05-19 SPORTSTER WITH TAG LIGHT

CATALOG EDITION 48 | PAGE 5.30



VERSION H ELECTRONIC BOX

902034 VERSION H

CATALOG EDITION 48 | PAGE 6.24



HOT SHOT PIPES EXHAUST SYSTEM

685611 04-13 XL, TOP CHOPP STAGGERED, BLACK

CATALOG EDITION 48 | PAGE 7.38



MINI TEARDROP STEALTH AIR CLEANER KIT

912479 07-19 SPORTSTER

CATALOG EDITION 48 | PAGE 8.50

Ribsters



CAM COVER “RIBSTERS”

607197 CAM COVER 91-19 SPORTSTER, RAW

CATALOG EDITION 48 | PAGE 9.61



ROCKER BOX COVER

607525 WTF SHOVEL STYLE, 04-19 SPORTSTER, RAW (EACH)

CATALOG EDITION 48 | PAGE 9.83



END

E-KICK

889008 04-19 SPORTSTER

CATALOG EDITION 48 | PAGE 11.24

Ribsters



END

PRIMARY COVER "RIBSTERS"

618481 04-19 SPORTSTER, RAW

CATALOG EDITION 48 | PAGE 12.21



270 SUPER CLASSIC TIRE

890739 FRONT 4.00-19 61H TT

914608 FRONT, REAR 5.00-16 72H TT

CATALOG EDITION 48 | PAGE 13.69



DF V BRAKE ROTOR

899921 FRONT 00-13 XL, 00-09 DYNA, 00-14 SOFTAIL, 00-07 TOURING

900924 REAR 11-19 XL, 09-10 XR1200, 10 XR1200X, 16-17 XG750

CATALOG EDITION 48 | PAGE 13.98



'SLAMMER' LOWERING KIT

680131 04-15 SPORTSTER (EXC. XL1200S, XR1200), BLACK

CATALOG EDITION 48 | PAGE 15.39



LOWBROW CUSTOMS
Where the action is!

FORK SHROUDS

619795 FITS ALL 39 MM NARROW GLIDE FORKS, BLACK

CATALOG EDITION 48 | PAGE 15.22



SHORT FRONT FENDER

893817 FOR 39 MM XL AND DYNA FORKS, WIDTH 120 MM

CATALOG EDITION 48 | PAGE 016.9



SHORT FAT BOB REAR FENDER

656122 04-06, 10-19 SPORTSTER, EXCEPT 10-13 XR1200

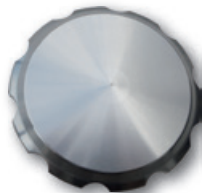
CATALOG EDITION 48 | PAGE 16.10



EFI TANK FOR LATE SPORTSTER

629442 INDENTED 3.3 GAL OEM STYLE TANK, SCREW BUNG ,
07-19 SPORTSTER

CATALOG EDITION 48 | PAGE 16.59



BILLET GAS CAP

653785 SMOOTH, SILVER, 96-19 SPORTSTER

CATALOG EDITION 48 | PAGE 16.90



motogadget

MST SPEEDOMETER

652566 MST SPEEDSTER, POLISHED

CATALOG EDITION 48 | PAGE 17.9



motogadget

MST STREAMLINE GAUGE CUP HOUSING

652561 FOR USE WITH ALL MOTOGADGET MST SERIES TINY

GAUGES, FOR 1" HANDLEBARS

CATALOG EDITION 48 | PAGE 17.9



motogadget

M-CAN MOTOSCOPE ADAPTER

696287 OBD-ADAPTER, 04-13 SPORTSTER, 04-11 DYNA,
04-10 SOFTAIL, 04-13 TOURING, 04-17 V-ROD

CATALOG EDITION 48 | PAGE 17.7



ACTIA®
ACTIA CZ CZECH REPUBLIC

ADVANCED TUNING DONGLE

619083 06-19 H-D MODELS (FOR ONE MOTORCYCLE)

CATALOG EDITION 48 | PAGE 19.49







Coffee Racer



BLACKLINE
BEAUTY



SPEED KING



Bag 'n' Red



Bolster



BLACK
BOB



BIG BAD JOHN



SILVER STAR



CUSTOM
CROSS



FISHERMAN'S
CHOP



SEXY THING



BLACK PEARL



Evil King



BRAINBLASTER



SPEED PEEK

BLOCKBUSTER

Knight Knuckle

SLIM JIM

alligator



LILY

CREEPY
SLOT

BLUE
BANDIT

Pony
Express

GUNSLINGER



Sportlin

SPORTY
SPICE

HOLLISTER

BLACK MESH

THUNDERBOLT



SPYKE

H^o SPORTY

THE FUSION

Moccarica

CC Eagle



for more details check www.custom-chrome-europe.com



BRASTER





for more details check www.custom-chrome-europe.com



Check Dealer Store!
custom-chrome-europe.com



World's Finest Products For Harley-Davidsons

Custom Chrome Europe GmbH

Carl-von-Ossietzky-Straße 8
55459 Grolsheim/Germany

Phone: +49 (0) 6721 - 4 007 - 0

Fax: +49 (0) 6721 - 4 007 - 100

e-mail: info@customchrome.de

www.custom-chrome-europe.com